

aurum⁺

bariatric bed

Quick Reference Guide with Trouble Shooting

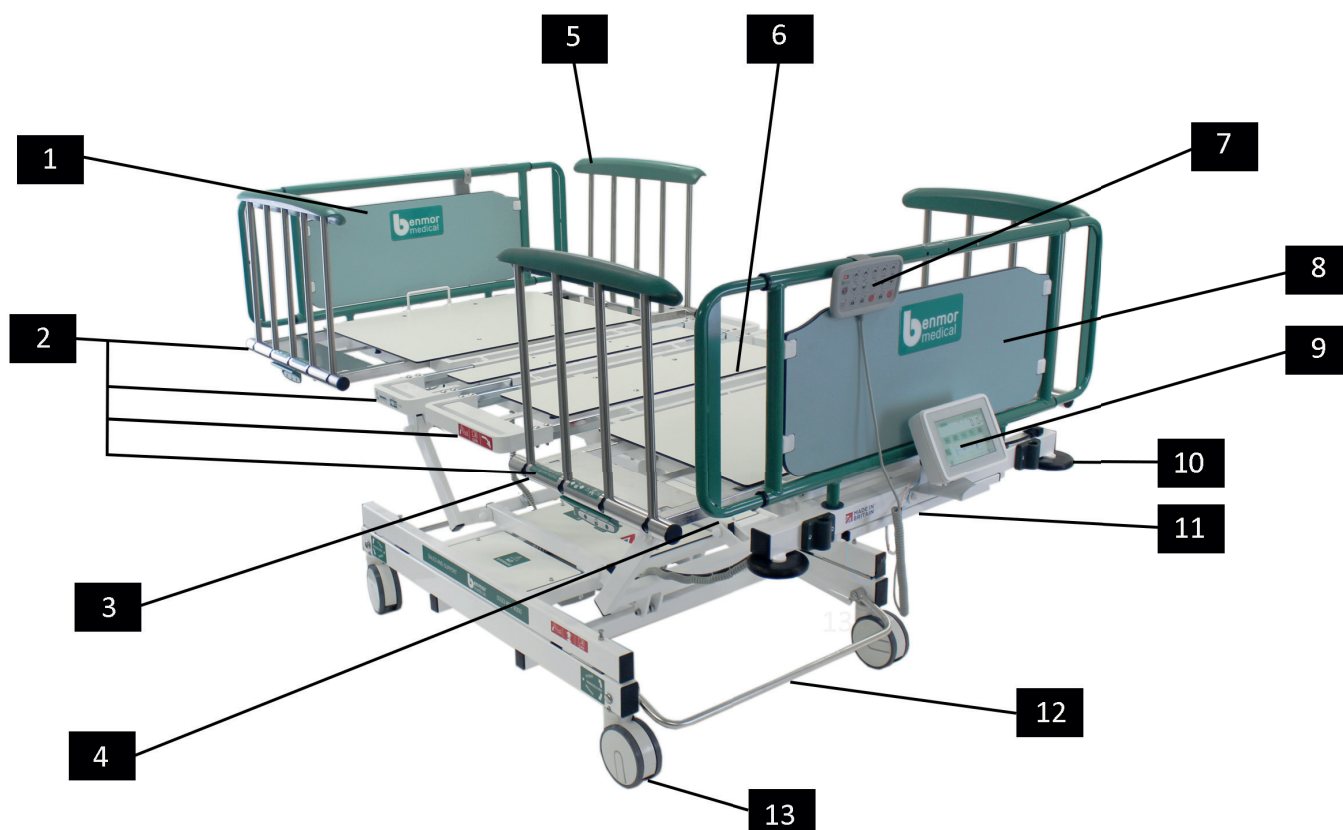
IMPORTANT!

This quick reference guide does not replace the bed's user manual, which can be provided by visiting www.benmormedical.co.uk or contacting us on 0333 800 9000.

Safety Instructions

Before using the bed, it is recommended: -

- All staff involved are familiar with the User Manual.
- All functions are tested.
- The bed is decontaminated and cleaned thoroughly before every use.
- The bed must be operated by personnel who have been properly trained or have suitable experience with equipment of this nature.
- The bed must only be used on clean, hard and flat horizontal surfaces.
- Never exceed the maximum load capacity of the bed, even for brief periods.
- Check there is no risk for the patient, carer, other people or accessories to become trapped when adjusting any sections activating, raising or lowering of the bed.
- **Safe working load: 490kg (77 stone)**
Maximum Patient Weight: 440kg (69 stone)
- For side ingress / egress, position the patient in the middle of the bed.
- DO NOT ingress / egress the bed at the head or foot end.
- The power cable for the bed must be unplugged before moving, cleaning or maintenance activities.



1. Removable Expandable Head Board
2. Individual Width Adjustable Mattress Sections
3. Manual CPR Cable (*located under mattress platform*)
4. Integral bed extension
5. Stowable Safety Rails with locking mechanism
6. 4 Section Profiling Platform
7. Supervisors Control Panel

8. Removable Expandable Foot Board
9. Weighing Scales (*optional*)
10. Protective Bumper Wheels
11. Integral Linen Shelf
12. Central Braking Lever
13. Central Locking 150mm Castors

Note: The above illustration is for reference purposes only. The specification of your actual Aurum bed may vary to the above illustration.

Expanding the Mattress Platform

The four-section, fully profiling mattress platform can be extended from 900mm to 1200mm (36" to 48") providing flexible care options for patients.



36" wide



42" wide

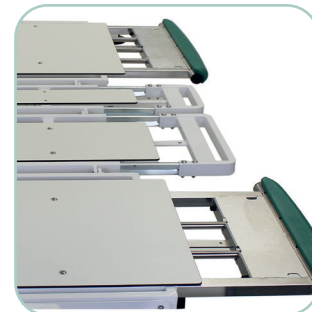
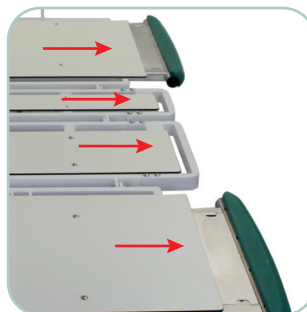
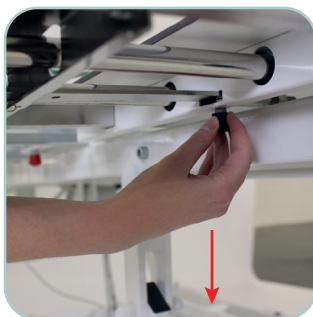
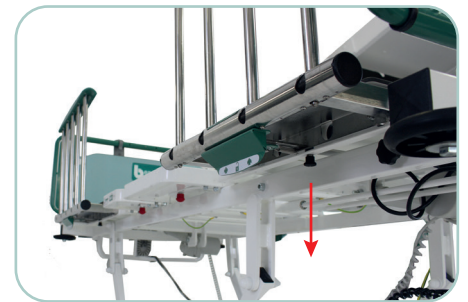


48" wide

To extend the mattress platform

1. Locate the locking pin underneath the mattress platform that you wish to extend and release.
2. Pull out the individual mattress platform section to the desired width.
3. Repeat this procedure for each mattress section as required.

Reverse the above processes to retract the bed frame and mattress surface.

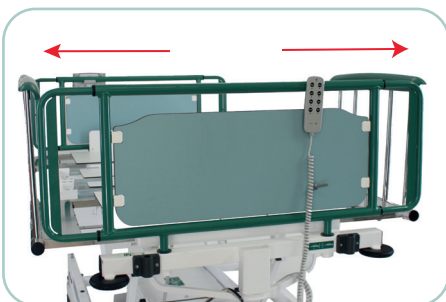


If there are space restrictions when transporting the bed, it can be reduced back to the standard 36" size to aid with getting through doors or corridors.

Expandable Headboard

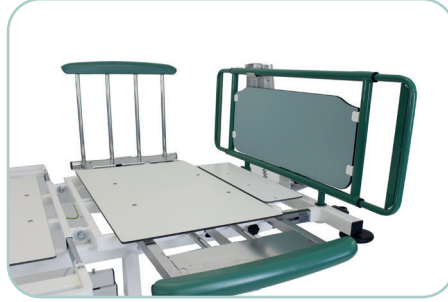
To adjust the width of the headboard

1. Locate the headboard pins in the middle of the headboard frame.
2. Push one pin in to release the side of the headboard you want to extend.
3. Whilst holding the pin in, gently pull out the end of the headboard frame until the pin relocates to the outer fixing.
4. Repeat this procedure for the other side of the headboard frame.
- Ensure the headboard is retracted when at the 915mm (36") transportation width



Length Extension

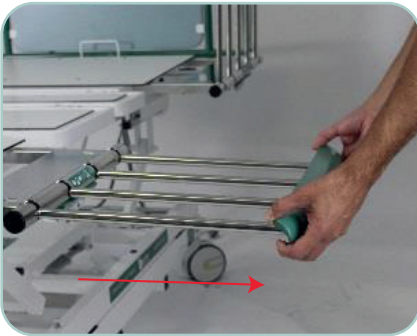
To extend/retract



- Loosen left and right hand wheel screws located underneath mattress platform at foot end of the bed.
- Pull the extension out as far as it will go (or push in, if retracting).
- Tighten left and right hand wheel screws until they are locked in position.
- Lift footboard platform from mattress platform and place in horizontal position (reverse, if retracting)

Stowable Safety Rails

The Aurum+ bed has 4 Stowable Safety Rails allowing the user to store the Safety Rails within the bed frame.



To Position Stowable Safety Rail in upright position

1. Pull the Stowable Safety Rail out fully from the frame, towards you
2. Rotate the Stowable Safety Rail 90° upward
3. Let the Stowable Safety Rail drop into position, where it will automatically lock in position



When pulling the safety rail out in the horizontal position, ensure it is pulled out fully before raising vertically.



Unlocking Stowable Safety Rail

1. To unlock, pull the lever positioned under the Stowable Safety Rail towards you.



To Position the Stowable Safety Rail in Stowable position

1. To unlock, pull the lever positioned under the Stowable Safety Rail towards you with one hand whilst pulling the Stowable Safety Rail up from the frame
2. Rotate the Stowable Safety Rail 90° down so it is level with the mattress platform
3. Gently push the Stowable Safety Rail into the mattress platform



The Stowable Safety Rails shall not be used as support or leverage for the patient, when leaving or repositioning on the bed.

Expanding the mattress using foam inserts

Width adjustment is achieved using two 152mm (6") foam inserts, placed either side of the mattress. The extension pieces are kept securely in place through D-ring style straps and a Dartex box sheet.



Once the foam inserts have been placed on either side of the mattress, a 1220mm (48") fitted sheet is placed over the mattress.



Remove stretch cover to reveal the foam extensions



Loosen and separate the D-ring on each retaining strap to allow removal of the foam extensions

Central Braking Lever



Down - Brake Position

All four castors are fixed



Centre - Neutral Position

Castors move freely in all directions



Up - Steering mechanism

Head end castor fixed for easy steering

Manual CPR



There are 2 manual CPR levers, located on each side of the bedframe, toward the foot end. To operate, pull the lever toward you.

To reset the bed frame after CPR consult the supervisor control by pressing the down arrow on the backrest before returning it to its desired position.



Manual CPR should only be operated in an emergency. The manual release will lower the back rest at speed.



Before using Manual CPR please ensure staff and carers are at a safe distance from the head end of the bed frame to eliminate risk of entrapment

Operating the Control Units



Before carrying out these operations, check there are no objects on or under the lower frame which could interfere with the bed movement. This function can be locked out by means of the Supervisor Control Panel.

Supervisor Control Unit



To operate the Supervisor Control Unit press and hold the desired Mattress Platform positioning button, Trendelenburg Anti-Shock positioning button or the CPR button. To ensure that functions are unlocked, the padlock buttons should not be displaying an LED light



CPR POSITIONING



TRENDELENBURG ANTI SHOCK POSITIONING



FOWLER POSITIONING



The Supervisor Control Unit has a bed battery level indicator. When plugged in and charging these lights will flash.



Note: Keep the bed plugged into mains at all times to maintain the life of the battery back up



Note: If the bed is operating slowly or not at all, it is likely it is no longer plugged into mains

Patient Handset



Front of handset



Back of handset

The Patient Handset is connected by a flexible cable and can be positioned either side of the bed. It adjusts individual parts of the bed mattress platform and has limited functions opposed to the Supervisor Control Panel.

Locking Procedure



There are 3 lockout buttons on the supervisor control panel to limit certain movements on the bed frame.

Simply press the button to lockout the appropriate function. Once locked the LED light will show. To unlock, press the button again and the light will disappear.

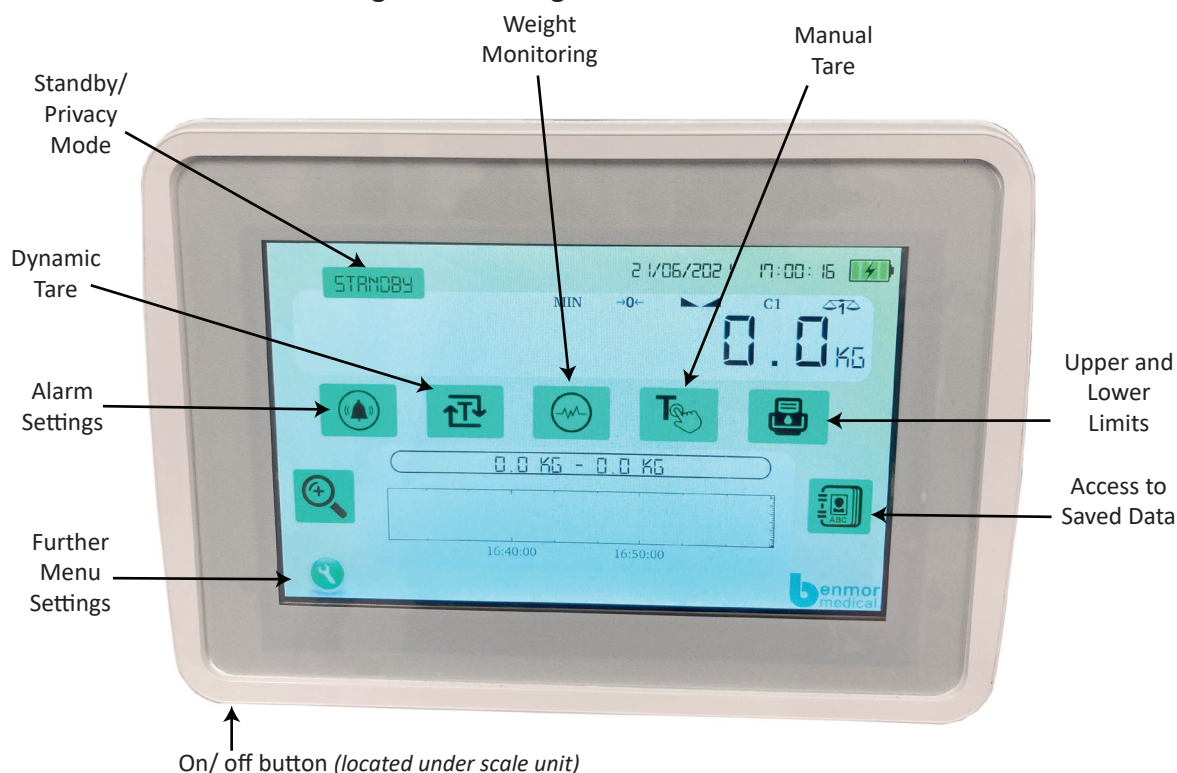


Note: When selecting individual Lockout Switches, the Supervisor Control Panel and Patient Handset will be locked out.

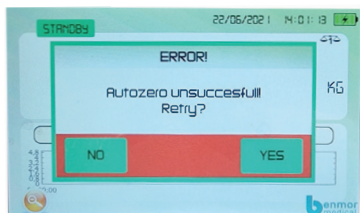
The CPR function, Trendelenburg Anti Shock Positioning and Fowler positioning buttons cannot be locked

Integral Weighing Scales


Ensure the mattress and bedding is in place before turning the scale unit on
 Set the scales up before the patient is in the bed, if this is not the case please see the steps below
 Leave the scales on for constant weight monitoring



Turning the scale unit on whilst the patient is in bed



Mattress weights:
 NoDec Air Mattress & Pump - 25.4kg
 Verto Turning Mattress & Pump - 19.6kg
 Foam Mattress - 31.8kg

1. Turn the scale unit on
2. Scale will display the error "Autozero unsuccessful. Retry?" Press NO
3. Scale will then display the weight of the patient and the mattress
4. Press Manual Tare 
5. Input the weight of the mattress and press enter
6. The scale unit will now display the patients weight only

Adding & Removing Weight

To add items to the bed whilst the patient is in situ, (e.g extra bedding/ equipment) press the Auto Tare function before doing so.



1. Press Auto Tare Button
2. Add the additional weight
3. Press Save

Repeat the same steps when removing the additional weight

Privacy Mode

Pressing the Standby button will hide the patients weight/sensitive data from the display unit.



To return to the original display press the Standby button again

For further instructions please refer to the user manual.

Foam & Alternating Air Mattress Systems (with foam extension)



Please ensure you are familiar with the Instruction Manual before using the Bari Foam+ and NoDec Bari Mattress System, with particular regard to the General Cautions/Warnings section on page 14.



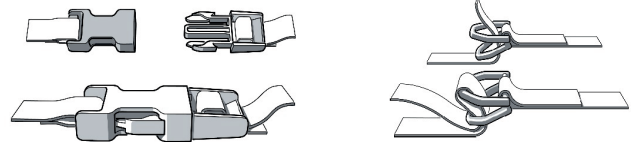
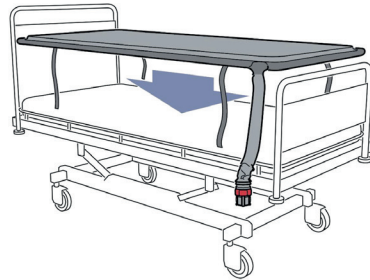
Bari Foam+ Bariatric Mattress



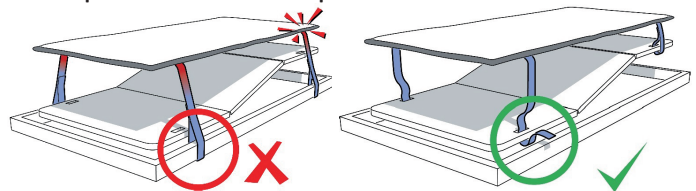
No Dec Bari+ Alternating Air Mattress

Installation of Bari Foam+ and NoDec Bari+ Mattress System onto Mattress Platform

1. Place the mattress onto the bed frame, ensuring the top cover is facing upwards and the air supply hose (applicable to the NoDec Bari+) is positioned at the foot end of the bed.



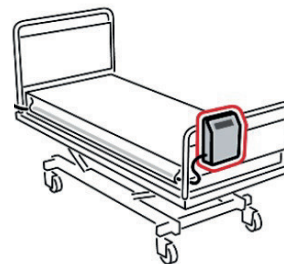
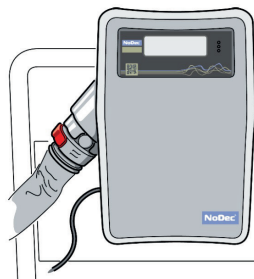
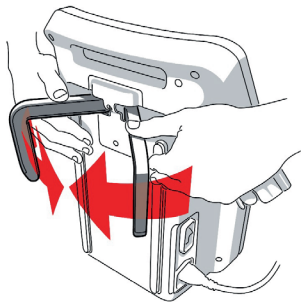
2. Secure the mattress to the bed using the straps and fasteners provided.



Ensure that fastened straps do not restrict the operation of any moving parts of the hospital bed. Straps attached around both moving parts and fixed parts of a bed frame will cause severe damage to the mattress. After installation carefully test the functions of the bed to ensure the mattress moves freely with the bed platform.

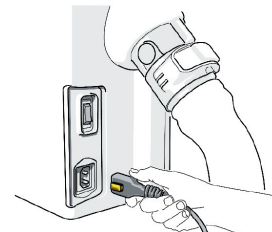
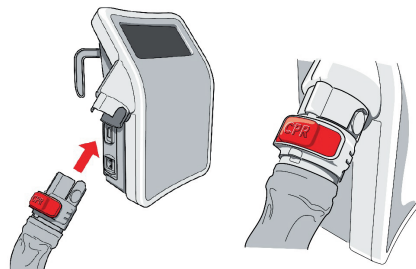
Installation of NoDec Bari Pump Unit

3. The hooks on the back of the NoDec Bari+ have been designed to accommodate a variety of bed frames and can be adjusted easily by pushing down on the hooks and rotating.



4. Hang the unit onto the bed frame at the foot end of the bed with the control panel facing outwards.

5. Check that the CPR clip is in the closed position and plug the air supply hose into the dock.



6. Plug the power cable into the pump and then plug the other end into an easily accessible mains supply socket. Turn the unit on using the switch above the power cable socket.

7. Wait for approximately 30 minutes and the mattress system is ready for use.



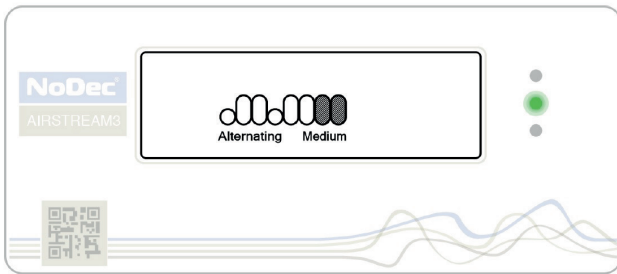
Due to the special design on the power cable's connection, it cannot be pulled out without pushing the yellow button.

For information on how to extend the mattress width, please refer to page 5.

NoDec Bari+ Alternating Air Mattress (cont.)

Inflation

AUTOMATIC ALTERNATING MODE - Once the unit has inflated it will automatically default to Alternating Mode and calibrate to the patients weight. The screen will be displayed and the LED will turn green.



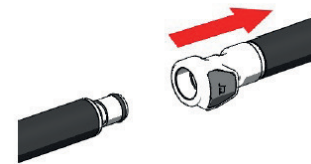
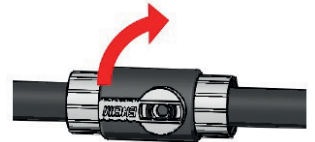
Unlocking - To unlock the touch screen press and hold until the padlock displayed is fully open.

Ingress/Egress deflation

Set the Pump onto Static Mode

- Have the patient sat up on side of the mattress indicated by the "Exit" arrow.
- Unzip the bottom cover from the head end of the mattress revealing three taps. Turn each tap in sequence as follows:

Towards the foot end of the mattress, un-clip three visible valves as follows:



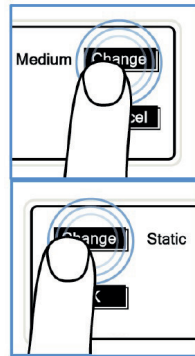
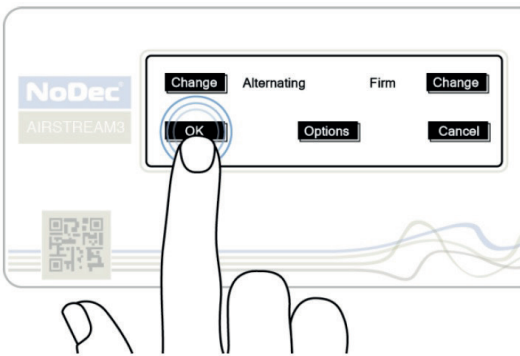
The middle section will deflate and the patient can be easily removed from the mattress.



Ensure that the mattress is returned to its normal use before giving any patient care by following these steps in reverse.

User Settings

The NoDec Bari+ has a total of 3 different modes, **ALTERNATING** (soft, medium, firm), **STATIC** (soft, medium, firm) and **MAXIMUM INFLATION**.

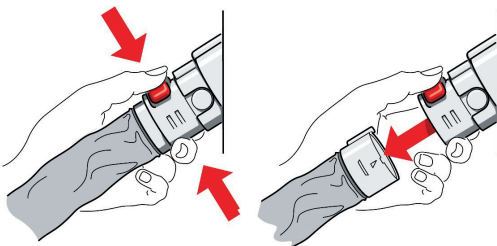


When pressing the different 'Change' buttons displayed the user can cycle through the different options until the desired mode is found. Touch the 'OK' button displayed on the screen to confirm selection.

N.B: To return to normal operation without making any changes, press the Cancel button.

Emergency CPR

The system is equipped with an emergency CPR release which rapidly deflates the mattress so that cardiac resuscitation can be performed.

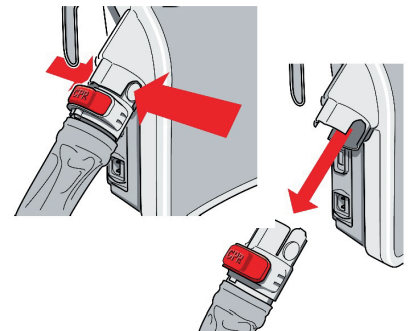


To deploy this emergency system, simply grip the CPR unit and push the RED BUTTON.

Transport Mode

Set to static mode. When all cells are inflated the pump should be **SWITCHED OFF** and the umbilical hose separated.

Push the buttons on the sides of the umbilical dock and disconnect. The mattress itself will remain inflated for several hours.



Verto Low Air Loss Turning Mattress



Please ensure you are familiar with the Instruction Manual before using the Verto Low Air Loss Turning Mattress.

Installation & Inflation



1. Unfold the Mattress on the bed. Use the straps on the mattress cover to secure it to the moving parts of the bed frame to allow raising and lowering of the head and foot end without tearing the cover.
2. Position the **Electronic Control Unit (ECU)** on the foot board, and make sure the mattress hose assembly is connected securely to the ECU.
3. Attach the power cord to the ECU and plug it into the electrical outlet on the wall. The amber **Standby** light will turn on. Press the **Power** Key, and the green light will turn on.

DO NOT OPERATE THE ELECTRONIC CONTROL UNIT WITHOUT IT BEING CONNECTED TO THE AIR CELLS.

4. Press the **Mode** Key to **Max Inflate**. The ECU will come on and quickly inflate the mattress to firm settings.
5. Press **Turn** Key and select desired turning mode. Press **Time** Key and select desired turning time. Press **Turn Angle** $\frac{1}{4}$, $\frac{1}{2}$, $\frac{3}{4}$ or full turn. In this mode, the entire mattress is at a constant pressure.

EXAMPLE 1: If the following are selected: **Time:** 30 minutes; **Turn:** Both directions; Turning Angle: Full; - The patient will be turned left 30 minutes, then right 30 minutes at the full angle, and the cycle keeps on repeating.

EXAMPLE 2: **Time:** 30 minutes; **Turn:** Right or left; **Turning Angle:** Full; - The patient will be turned 30 minutes to the right or left, and no turn for 30 minutes, and the cycle keeps on repeating.

6. **Static Mode:** (No turning): The required patient comfort pressures can be achieved by pressing the **Soft** or **Firm** Keys. The set pressure is indicated by the number of green lights illuminated. Patient comfort levels can only be adjusted in the static mode.
7. **Static Therapy:** For wound treatment or personal hygiene, press the **Mode** Key to select Static mode. In this mode the entire mattress surface is at a constant pressure. To return to the turning mode, press the **Turn** Key.
8. For CPR or quick deflation, disconnect the three (3) long hoses from the ECU by squeezing the small grey levers on the connectors and by pulling the hoses off the ECU and the small CPR valve with the red tab. **CAUTION: DO NOT DROP THE ECU!**
9. When the patient is not in bed, press the **Standby** Key. Refer to instructions on following page.

Verto Low Air Loss Turning Mattress (cont.)

Electronic Control Unit (ECU)

POWER:	Press the Power Key to turn the ECU On or Off.
STANDBY:	When the amber light is on the power to the ECU is on, but is NOT yet operating.
ON:	When the green light and LED display is on, the ECU is on and is operating.
SOFT:	Press the Soft Key to decrease air pressure for patient comfort levels. <i>NOTE: ECU must be in <u>Static Mode</u> to adjust patient comfort levels.</i>
FIRM:	Press the Firm Key to increase air pressures for patient comfort levels. <i>NOTE: ECU must be in <u>Static Mode</u> to adjust patient comfort levels.</i>
MAX INFLATE:	For quick inflation of the mattress to maximum firmness. <i>NOTE: ECU has a 15 minute auto timer or can be disengaged by pressing the button.</i>
TIME:	Press Key to select 10, 20, 30 or 60 minute turning cycle time.
TURN:	Press Key to select “Left” only, “Right” only, “Both” or Static” (no turn).
PAUSE:	Will hold the turn function indefinitely if more time is needed to give personal care etc whilst the patient is on their side. Release the pause button for normal operation to continue.
STATIC:	This mode is selected to achieve static air therapy, and is recommended during wound treatment, personal hygiene and/or transfers. In this mode, patient comfort levels can be adjusted by using the Soft/Firm keys.
TURNING ANGLE:	Press Key to select $\frac{1}{4}$, $\frac{1}{2}$, $\frac{3}{4}$, or full turning angles. <i>NOTE: Angles: $\frac{1}{4} = 10^\circ$, $\frac{1}{2} = 20^\circ$, $\frac{3}{4} = 30^\circ$, full turn angle = 40°.</i>
LOCK:	Locks in/out all ECU functions. To lock in selected settings, <u>hold down Lock Key until light turns on</u> . No changes on the selected settings on the ECU can be made until the Lock Key is once more held down until the light turns off.
POWER FAIL:	An audio visual alarm will sound during a power failure.
LOW PRESSURE:	An audio visual alarm will sound during hose disconnection or a major leak in the air chambers or side bolsters.

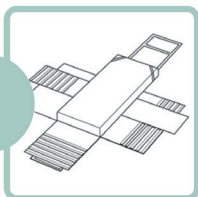
Transportation Mode

- 1) Turn the pump ECU unit off and unplug from the power supply with patient still in situ. Mattress will start to deflate. **DO NOT** pull the CPR valves as this will release all air from the mattress.
- 2) Once mattress starts to soften (max 2 minutes) reduce the bed platform (see bed instructions) to allow access through doorways/lifts. Both sides or one side of the bed can be reduced with the mattress attached depending on size of access points. **DO NOT** detach the mattress straps from the bed.
- 3) Repeat the above process in reverse order once the bed has arrived at its destination. It is important to **WIDEN THE BED PLATFORM BEFORE RE-INFLATION**. The mattress will re-inflate with the patient still on the bed to its previous pressure setting or adjust accordingly.

S-CAPEPOD Evacuation Sheet *Rapid and safe evacuation for bariatric bedridden people*

CAUTION: Proper use of the S-CAPEPOD requires training and periodic practice. Do not overestimate your skills, strengths and abilities. Staircase evacuations can be difficult. You must be able to control the patient's descent speed while sliding the patient down the staircase. In some instances (heavier patients, a staff member lacking training or sufficient strength) you should request the assistance of a second staff member. Periodic practice using the S-CAPEPOD should be an element of evacuation exercises. In all instances, compliance with the instructions below is important:

1



This is the unfolded Bariatric S-CAPEPOD.

2



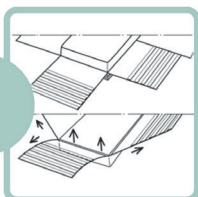
Pull the right end, the left end and the bottom flap of the Bariatric S-CAPEPOD from under the mattress. Small flaps are also attached to the left and right-flaps. Pull these along.

3



This operation is performed by two people. Each person should stand at one long side of the bed. Pull the small flaps towards each other and tack them together with Velcro. Position them under the abdomen of the patient. Do this as tight and powerful as possible.

4



The foot end has stitched corners. You place these around the mattress corners at the foot end. For wide mattresses you must partly dent the mattress corners in order to fit them into the stitched corners. The corners should end up above the mattress.

5



Pull both ends of the long flaps vigorously towards each other and tack the Velcro of the right end to the left end. Then attach the bottom flap with the Velcro onto the other already twinned flaps.

6



Grab the pull-tab at the foot end. This is located on the underside of the foot end in an envelope. The second staff member grabs the pull-tab at the head end. This is located at the head end of the Bariatric S-CAPEPOD. Now turn the mattress simultaneously. Do this slowly and turn the mattress about 80 degrees. Keep the mattress levelled as long as possible and then lower it. Pull alone or in pairs slowly until it is situated on the ground.

7



Move the person to a safe environment. Use two staff members for this. Ask a third person to assist while steering through tight turns.

8



In some circumstances you may have to evacuate using the stairs. Do this in a controlled way. You should stand a few steps lower, alone or with a second staff member, and pull the bedridden patient towards you. When his/her legs are above the stairs, one staff member goes up and assists the third staff member. Together they are the inhibitors who can slow down the operation by using the pull-tab at the head end. The staff member at the foot end now pulls the patient towards himself and ensures that the mattress stays in contact with the same leg and holds himself steady with one hand on the handrail. The two other staff members provide additional inhibition. If possible, they support themselves with one hand on the rail as well. Communicate with each other and descend step by step and continue towards a safe environment.

Troubleshooting - Aurum+ Bariatric Bed



Operating issues that can arise with the bed can usually be solved by following these simple steps: -

PROBLEM	POSSIBLE CAUSE	SOLUTION
None of the electric operating system is functioning	<ul style="list-style-type: none"> > Mains power supply failure > Control box or Supervisor Control Panel are in locked or off position > Loose electrical connections > Electrical unit failure 	<ul style="list-style-type: none"> > Is the power lead plugged in and switched on? > Check that the orange power light on the Handset is on > Switch the keys into the open position > Check all connections between the actuators and the control unit > Contact your technical service provider
Any individual electric functions are not responding	<ul style="list-style-type: none"> > Loose electrical connections > Unit failure 	<ul style="list-style-type: none"> > Check the individual connections to the control unit > Contact your technical service provider
Bed is vibrating		<ul style="list-style-type: none"> > Contact your technical service provider
Castor(s)	<ul style="list-style-type: none"> > The castor brake system may be worn 	<ul style="list-style-type: none"> > Change castor – contact your technical service provider
The castor(s) do not swivel correctly	<ul style="list-style-type: none"> > The castors may be dirty 	<ul style="list-style-type: none"> > Clean the castors



Note: If any function of the bed becomes compromising or dangerous to the patient in any way, discontinue use immediately and report to your service provider.



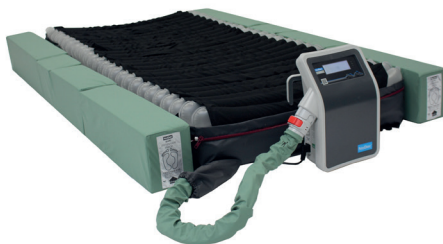
Never try to repair an electrical fault if you are unqualified or have not been officially trained by Benmor Medical.



If the above solutions do not solve the issue, please call our 24/7 customer support helpline on 0333 800 9000 to speak to an expert technician*

*Please note - if a technician is called out to solve a fault and discovers no issue with the equipment a call-out fee may be applied. Any faults caused by user damage may also result in additional costs. To discuss these costs or if you have any questions, please contact our team by phone or via email info@benmormedical.co.uk.

Troubleshooting - NoDec Bari+ Alternating Air Mattress



Should any problems arise with the operation of the mattress, please carry out the following checks: -

Is there an alarm sounding on the pump?

NO



YES



If NO then go through power checks

1. Is the plug inserted correctly into the electrical socket
2. Ensure the plug socket is switched on
3. Try a different electrical socket
4. Check that the plug is not broken
5. Is the IEC lead secured correctly to the dynamic mattress pump?

If YES then go through the following checks

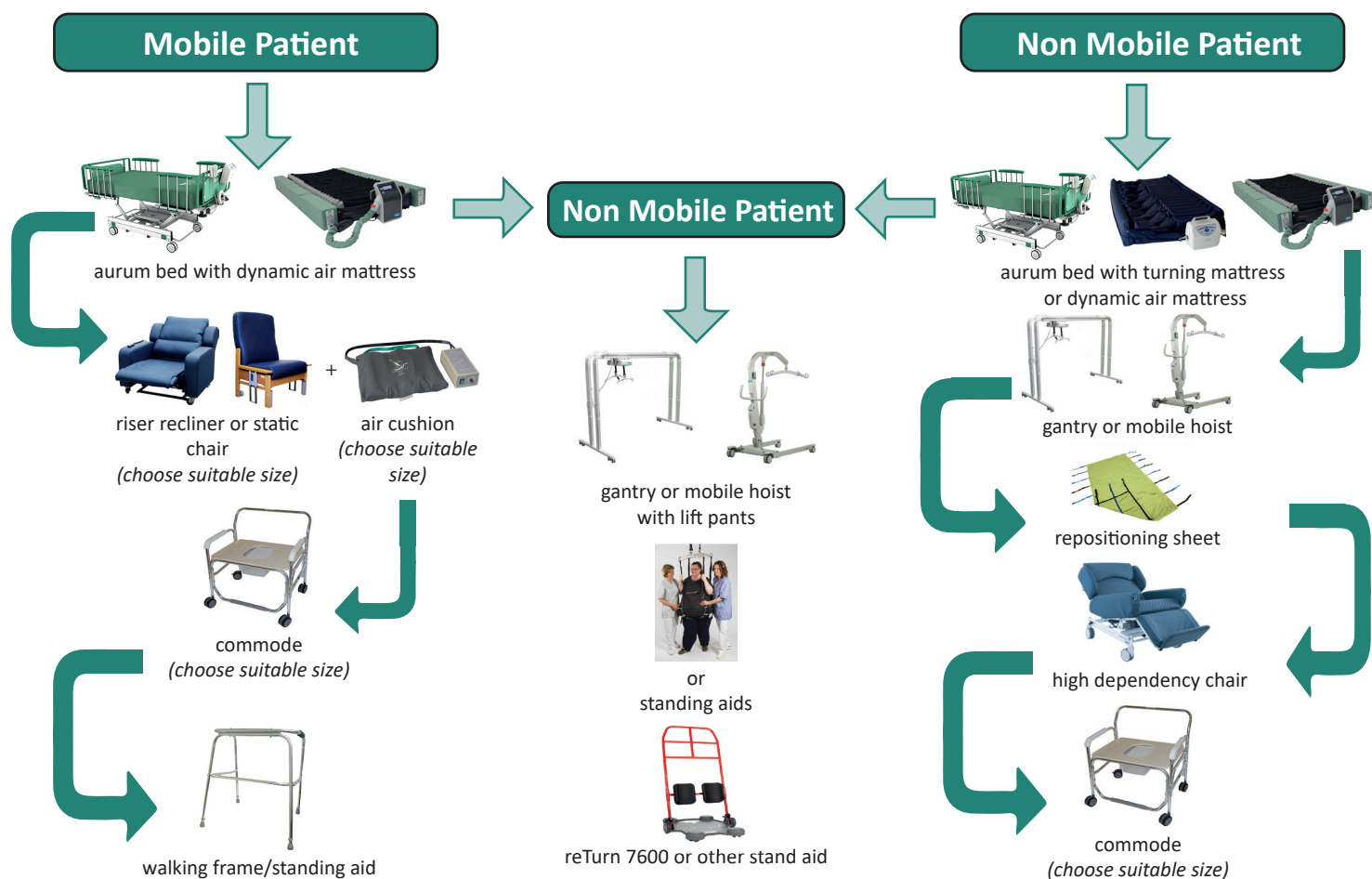
1. **IF HIGH PRESSURE ALARM IS SHOWING** on the mattress pump - release air from the mattress using the CPR button for a few seconds, ensure the CPR button is secured correctly once enough air has been removed from the mattress.
Switch the pump off and on again and wait for the mattress to re-adjust. If the alarm sounds again ensure that a sufficient amount of air was released from the CPR valve.
Alternatively, adjust the 'firmness' of the mattress using the touch screen located on the mattress pump.
2. **IF LOW PRESSURE ALARM IS SHOWING** on the mattress pump - check that the CPR valve and pipes are connected correctly to the pump so that no air is leaking.
3. **IF 'NO MAINS' ALARM IS SHOWING** on the mattress pump - ensure that the power cable is secured correctly to the pump. Check that the mattress plug (black lead) is plugged into a functioning plug socket and is switched on.

If the above checks do not solve the fault, please call our 24/7 customer support helpline on 0333 800 9000 to speak to an expert technician*



*Please note - if a technician is called out to solve a fault and discovers no issue with the equipment a call-out fee may be applied. Any faults caused by user damage may also result in additional costs. To discuss these costs or if you have any questions, please contact our team by phone or via email info@benmormedical.co.uk.

Assessing Suitable Equipment for a Bariatric Patient



Always consult your back care team or manual handling department for advice on the most suitable equipment for patients

Other products available from Benmor Medical



Bariatric Beds

- width expandable • dual braking systems
- integral weighing systems • stowable safety rails



Floor Level Beds

- ultra low height • stowable safety rails
- fully articulating • mattress options available



Pressure Care Surfaces

- foam mattress • air mattress
- turning mattress • air cushions



Seating

- riser/recliner • static
- high dependency chairs



Toileting

- bariatric commodes • extra large commodes
- transfer chairs • shower chairs



Hoists

- gantry hoists • mobile hoists
- hoist attachments



Scales

- bed scales • hoist scales
- wheelchair scales • patient scales



Moving and Handling

- standing aids • walking aids
- slidesheets



Lifting and Supporting

- patient slings • standing aids
- repositioning aids



Wheelchairs

- bariatric wheelchairs • folding wheelchairs
- wheelchair power pack

- Innovative products & services
- Expert advice
- Highest levels of product conformity
- Design and manufactured products in the UK
- CPD certified training courses
- UK nationwide rental coverage 24/7
- Training and installation
- Patient assessments



HEAD OFFICE

The Aurum Centre
Ham Barn Business Park
Farnham Road
Liss
Hampshire
GU33 6LB

SOUTH WEST BRANCH

The Iridium Centre
Unit B
7A4 Victoria Road
Avonmouth
BS11 9DB

NORTH WEST BRANCH

The Caurum Centre
Unit 6 Crossville Building
Flint Trade Park
Holywell Road
Flint
CH6 5RR

MIDLANDS BRANCH

The Argentum Centre
Welland Business Park
Valley Way
Market Harborough
Leicestershire
LE16 7PS

NORTH EAST BRANCH

The Aereus Centre
Rainton Bridge Industrial Estate
Mercantile Road
Houghton-le-Spring
Tyne and Wear
DH4 5PH



supporting bariatric care

Tel: 0333 800 9000
www.benmormedical.co.uk
info@benmormedical.co.uk



BS EN 13485:2016 - MD 607484
CE607483



ISO 9001:2015 - FM 607485